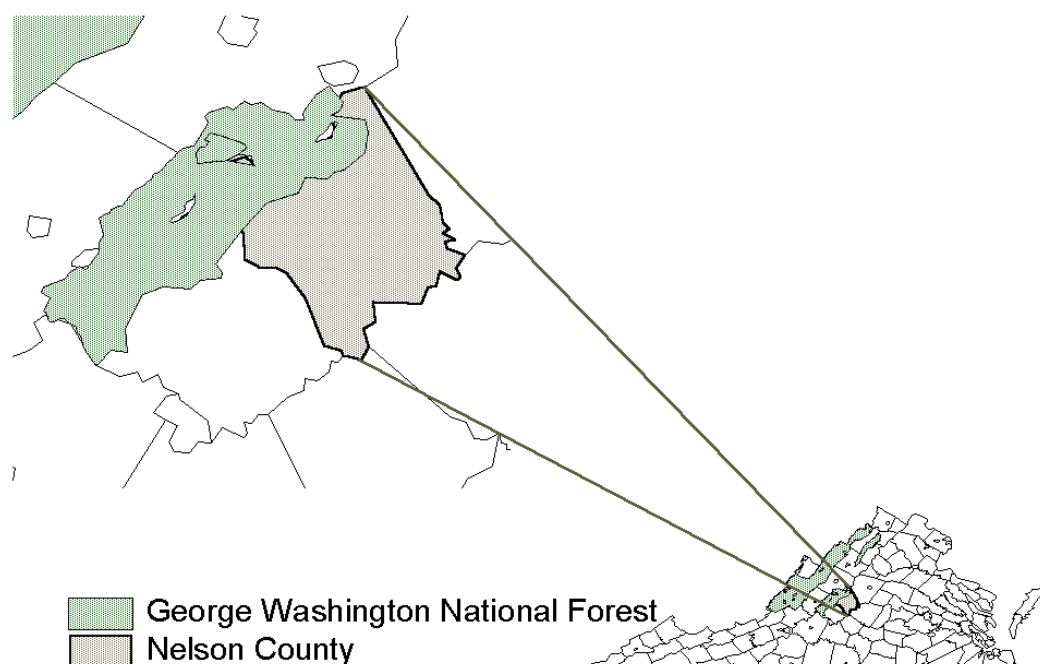


# Regional Economic Profile:

## *Nelson County, VA*

---

The Wilderness Society has compiled this socio-economic profile of Nelson County, Virginia in order to provide a basis for discussion about trends affecting the region now, and potential effects / implications of changes in land management on the George Washington National Forest.



<b>Basic Statistics</b>	
Profile Area (sq. miles)	464
Population, 1998	13,901
Pop. Growth Rate, 1970-1998	0.67%
Per Capita Personal Income, 1998	\$19,659
PCPI Growth Rate, 1970-1998	2.39%



*Regional Economic Profile: Nelson County, Virginia*

Spencer Phillips & Ann Ingerson  
The Wilderness Society  
P.O. Box 25  
Craftsbury Common, VT 05827  
Phone (802) 586-9910  
[srp@sover.net](mailto:srp@sover.net)

October, 2000

© The Wilderness Society, Washington, DC.  
This text may be reproduced provided that it is not sold, the content is not altered, and the authorship and copyright are acknowledged.

## Table of Contents

Acronyms/Sources of Data .....	iii
Questions .....	1
Table 1: Population and Personal Income 1970-1998 .....	2
Figure 1: Income by Source 1998.....	3
Figure 2: Distribution of Income by Industry, 1998 .....	4
Figure 3: Trends in Income by Industry, 1970-1998 .....	4
Figure 4: Timber Industry Income 1970-1998.....	5
Figure 5: Personal Income, Service Industries, 1998.....	5
Table 2: Recreation and Tourism Related Income (selected industries) 1970-1998.....	6
Figure 6: Income in Recreation and Tourism Related Industries, 1998.....	6
Table 3: Personal Income from Transfer Payments, 1970-1998.....	7
Figure 7: Transfer Payments, by Type, 1998.....	7
Table 4: Employment by Type and Industry, 1970-1998 .....	8
Figure 8: Employment by Type, 1998 .....	8
Figure 9: Trends in Employment by Industry, 1970-1998.....	9

## Acronyms/Sources of Data

- REIS. Bureau of Economic Analysis. 2000. *Regional Economic Information System 1969-1998*. (CD-ROM). Washington, DC: U.S. Department of Commerce. REIS reports on the economic activities of people living in a geographic area. The data cover a 28-year period (1969-1998) and include employment by type by major industry division and personal income data by industry, like paper and allied products manufacturing, and engineering and management services. REIS also covers non-labor sources of income. Non-labor income includes dividends, interest and rent, and transfer payments.
- CBP. Bureau of the Census. 1999. *County Business Patterns 1999*. (CD ROM). Washington, DC: U.S. Department of Commerce. CBP reports the economic activities of the business establishments located in a geographic area. CBP data are derived from employee and wage reports filed by employers with the Department of Labor under Section 202 of federal unemployment insurance regulations. Section 202 does not cover agricultural workers, the self-employed or government employees. Nor does it provide statistics on non-labor sources of income. For this reason, employment and payroll figures from CBP will generally be lower than actual employment, payroll, and income.
- Census of Population and Housing. Bureau of the Census. 2000. *USA Counties* (CD-ROM) and *Census Bureau web site* (<http://www.census.gov>). Washington, DC: U.S. Department of Commerce. The decennial Census provides information on age, educational attainment, and journey-to-work. Annual estimates are also available for some items and geographic areas.

## Questions

The tables, charts and maps included in this profile present information about the economy of Nelson County, Virginia, adjacent to the George Washington National Forest. Some of the questions you may wish to answer based on this information are listed below. Conclusions or answers about the economy, however, are up to you. To dig deeper or for a head start finding materials that interpret economic trends, download a copy of our Resource Guide from [web address to be added].



Where do residents of Nelson County get their income? (Table 1 & Figure 1)

- How much is from labor (wages, salaries, proprietor's income)? (Table 1 & Figure 1)
- How much is from other sources, like dividends, interest, rent and transfer payments? (Table 1 & Figure 1, Table 3 & Figure 6)
- What are transfer payments anyway – what do they comprise? (Table 3 & Figure 6)
- Has the proportion of total income from these various sources changed since 1970? (Table 1)
- What do those changes suggest about the region's economy? (Table 1)



What kinds of employment, wage and salary, and proprietors' (self-employment) are important in Nelson County? (Table 4 & Figure 7)

- In what industries do Nelson County residents work? (Table 4 & Figure 7)
- Which industries are gaining and losing jobs in the region? (Table 4 & Figure 7)



What industries does the "service sector" comprise? (Figure 4)

- Which are the biggest service industries? (Figure 4)
- How well do service industry jobs pay? (Table 5 & Figure 8)



In which industries do Nelson County residents earn their income? (Table 1)

- Which industries are growing, based on income earned, and which are shrinking? (Table 1)
- Has the proportion of total income earned by workers in these industries changed since 1970? By how much? (Table 1)



What recreation and tourism-related industries provide jobs and income to Nelson County residents? (Table 2 & Figure 5)

- Note that there are not single industries called "recreation" or "tourism." Both include portions of several industries, especially retail trade and services, for which Table 2 provides information. Keep in mind that other industries also contribute to "Recreation and Tourism."



Finally, what do these trends mean for the future of Nelson County?

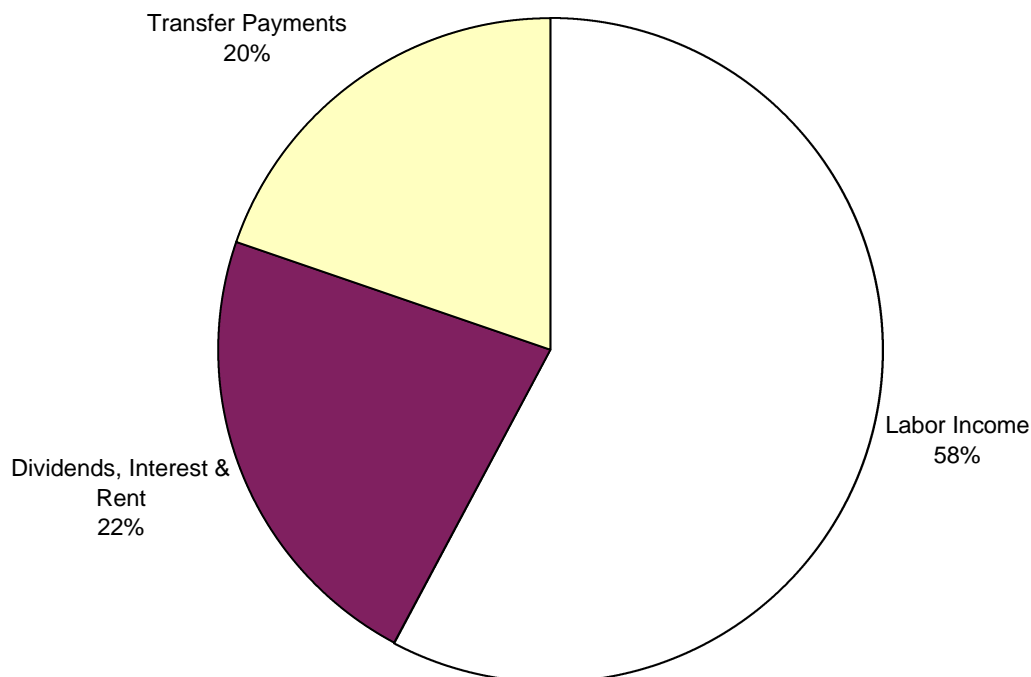
**Table 1: Population and Personal Income 1970-1998**

<i>All values in millions of 1998 dollars, unless noted</i>	Pct of TPI		Pct of TPI		Change	% Change
	1970	1970	1998	1998	1970-1998	1970-1998
<b>Total Personal Income and Population:</b>						
Total Personal Income (TPI)	120	100%	273	100%	154	128%
Nonfarm Personal Income	114	95%	271	99%	157	137%
Farm Income <sup>1</sup>	5	5%	2	1%	-3	-61%
Population (persons)	11,605	-	13,901	-	2,296	20%
Per Capita Personal Income (\$s)	10,317	-	19,659	-	9,343	91%
<b>Derivation of Personal Income:<sup>2</sup></b>						
Earnings by Place of Work <sup>3</sup>	66	55%	97	35%	31	47%
- Pers. Contributions For Social Insur. <sup>4</sup>	(2)	2%	(7)	3%	(5)	195%
+/- Adjustment for Residence <sup>5</sup>	28	23%	68	25%	40	143%
= Net Earnings by Place of Residence <sup>6</sup>	91	76%	158	58%	66	73%
+ Dividends, Interest & Rent <sup>7</sup>	13	11%	61	22%	48	382%
+ Transfer Payments <sup>8</sup>	16	13%	54	20%	39	247%
= Total Personal Income (TPI)	120	100%	273	100%	154	128%
<b>Components of Earnings (Labor Income):<sup>3</sup></b>						
Wage and Salary Disbursements	46.8	39.1%	66.4	24.3%	19.7	42.0%
Other Labor Income <sup>9</sup>	3.3	2.7%	8.3	3.0%	5.0	154.1%
Proprietors' Income <sup>10</sup>	15.7	13.1%	21.9	8.0%	6.2	39.7%
Farm Proprietors' Income	3.3	2.8%	1.0	0.4%	(2.3)	-68.7%
Non-Farm Proprietors' Income	12.4	10.3%	20.9	7.6%	8.5	69.1%
<b>Earnings (Labor Income), by Industry:<sup>3, 11</sup></b>						
Farm <sup>1</sup>	5	4.6%	2	0.8%	(3)	-61%
Non-Farm	60	50.3%	95	34.6%	34	57%
Private	49	41.2%	77	28.3%	28	57%
Ag Svcs, Forestry, Fishing & Other <sup>12</sup>	1	0.5%	2	0.9%	2	308%
Forestry	0	0.1%	0	0.0%	(0)	-214%
Mining	1	0.9%	2	0.7%	1	79%
Construction	3	2.8%	11	4.0%	8	230%
Manufacturing	22	18.4%	7	2.7%	(15)	-67%
Total Lumber and Paper Mfg.	1	0.5%	3	1.2%	3	467%
Lumber and Wood Products	1	0.5%	3	1.2%	3	467%
Paper and Allied Products	0	0.0%	0	0.0%	0	N/A
Transportation and Public Utilities	8	6.8%	11	4.0%	3	34%
Wholesale Trade	0	0.3%	1	0.5%	1	236%
Retail Trade	6	5.2%	6	2.1%	(1)	-10%
Finance, Insurance & Real Estate (FIRE)	1	0.8%	3	1.2%	2	251%
Services	7	5.6%	33	12.1%	26	393%
Government	11	9.2%	17	6.3%	6	57%
Federal civilian	2	1.7%	2	0.8%	0	3%
Military	0	0.3%	1	0.2%	0	76%
State and Local	9	7.2%	15	5.3%	6	69%

**Source:** Bureau of Economic Analysis. 2000. *Regional Economic Information System CD-ROM*. Washington, DC: U.S. Department of Commerce.

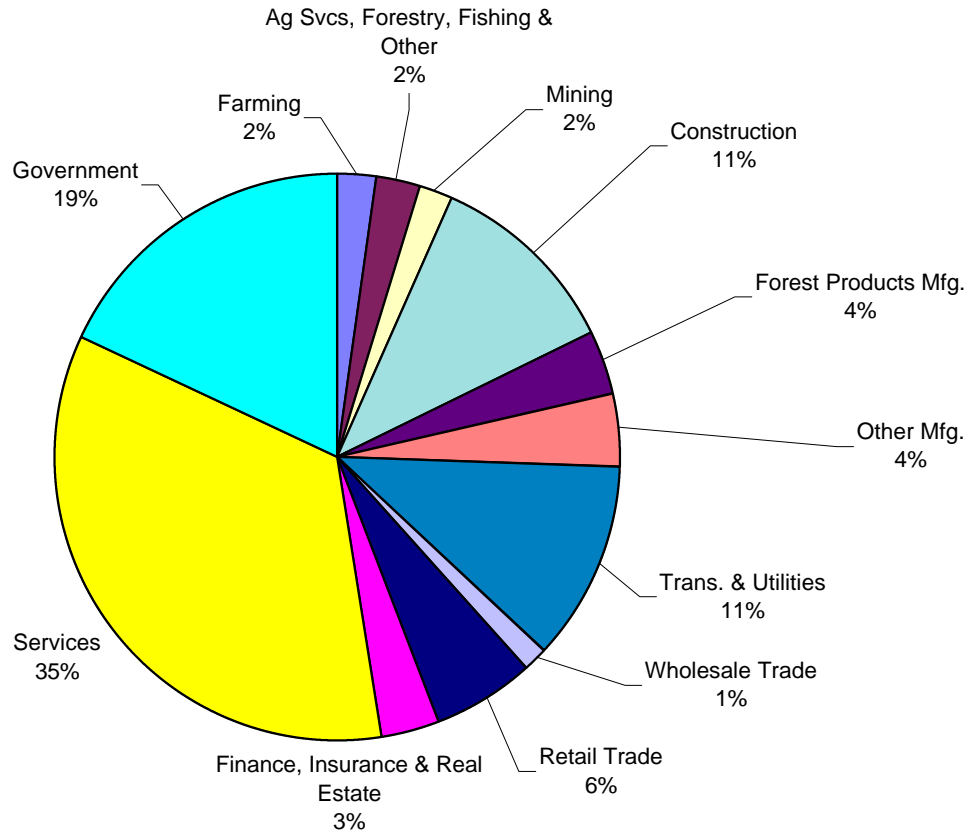
**Notes:**

1. **Farm Earnings** consist of: proprietors' net farm income; the cash wages, pay-in-kind and other labor income of hired farm workers; and and the salaries of officers of corporate farms.
2. **Total Personal Income** differs from **Earnings by Place of Work** and **Earnings by Industry** in two respects. First, it includes non-labor income and excludes personal contributions for social insurance. These adjustments make TPI a more complete picture of the money available to the region's residents. Second, it measures the income of the region's residents, rather than the earnings of employees and owners of firms located in the region. That is, it accounts for earnings of commuters to and from other regions.
3. **Earnings by Place of Work** consists of wages, salaries, other labor income and personal contributions for social insurance earned or paid at firms located in the area. It can be broken down into "Components of Earnings" or into "Earnings by Industry".
4. **Personal Contributions to Social Insurance** are payments by workers and the self-employed into Social Security, Medicare, Unemployment Insurance, and other programs. This adjustment is made for the purpose of calculating Total Personal Income, but is not made to Components of Earnings or Earnings by Industry.
5. **Adjustment for Residence** is the net inflow of earnings of interarea commuters. A negative adjustment means that the earnings of workers commuting into the region are greater than the earnings of residents who commute to jobs outside the region. This adjustment is made for the purpose of calculating Total Personal Income, but is not made to Components of Earnings or Earnings by Industry.
6. **Net Earnings by Place of Residence** comprises the labor income of residents of the region.
7. **Dividends, Interest and Rent** consists of current earnings from past investments and includes a capital consumption adjustment for rental income of persons.
8. **Transfer Payments** are payments to persons for which no current services have been performed. They comprise payments to individuals and to nonprofit institutions by Federal, State, and local governments and by businesses.
9. **Other Labor Income** consists of the payments by employers to privately administered benefit plans for their employees, employer contributions to government employee retirement plans, fees paid to corporate directors, and miscellaneous fees.
10. **Proprietors' Income** is the current-production income (including income in kind) of sole proprietorships, partnerships, and tax-exempt cooperatives. It includes inventory valuation and capital consumption adjustments.
11. **Industry classification:** 1969-1974 based on the 1967 Standard Industrial Classification (SIC); 1975-87 based on 1972 SIC; and 1988-1998 based on 1987 SIC.
12. **Other** consists of wages and salaries of U.S. residents employed by international organizations and by foreign embassies and consulates in the U.S.

**Figure 1: Income by Source 1998**

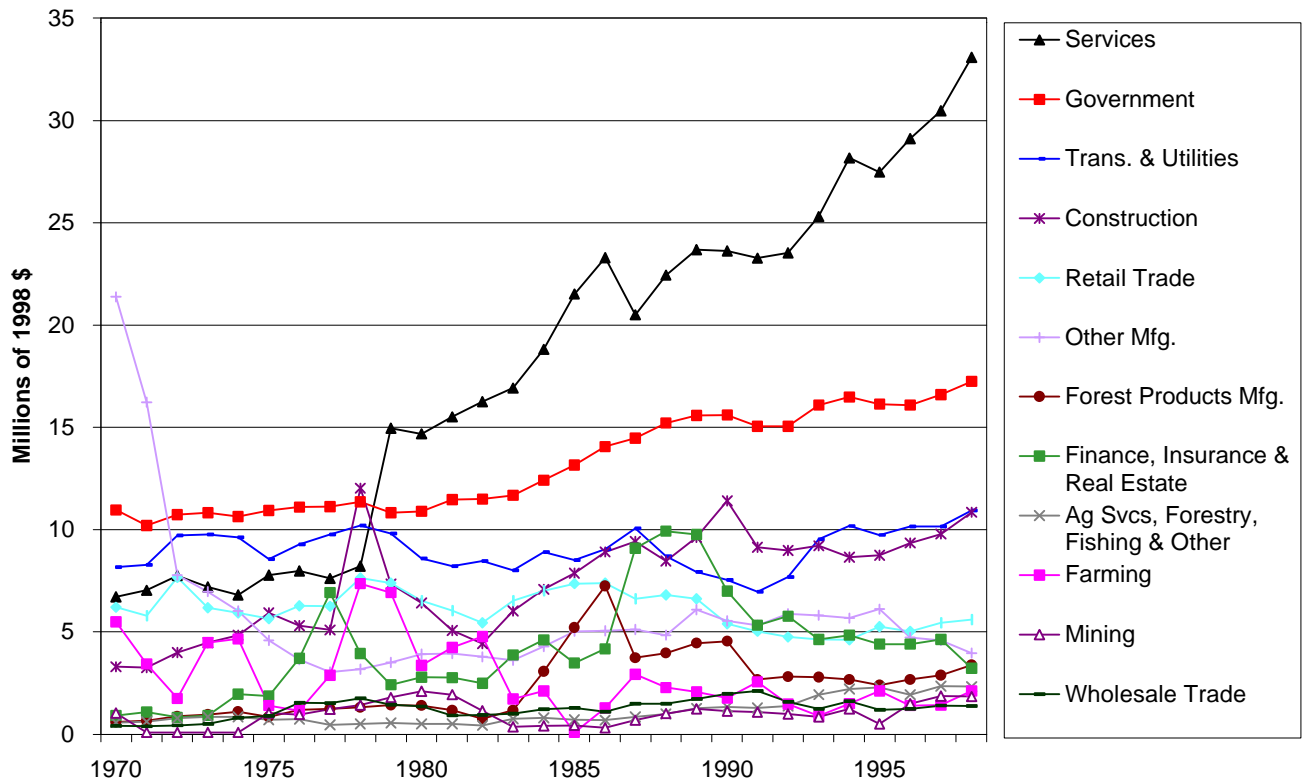
Source: REIS

**Figure 2: Distribution of Income by Industry, 1998**



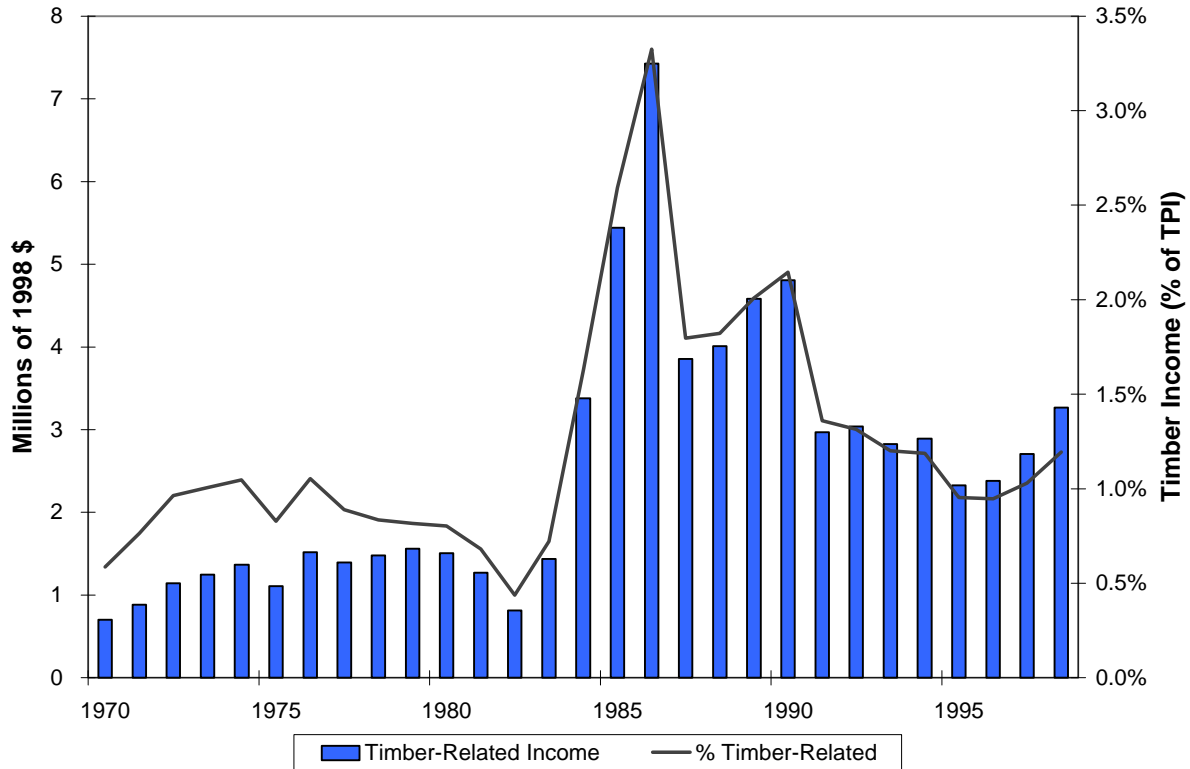
Source: REIS

**Figure 3: Trends in Income by Industry, 1970-1998**



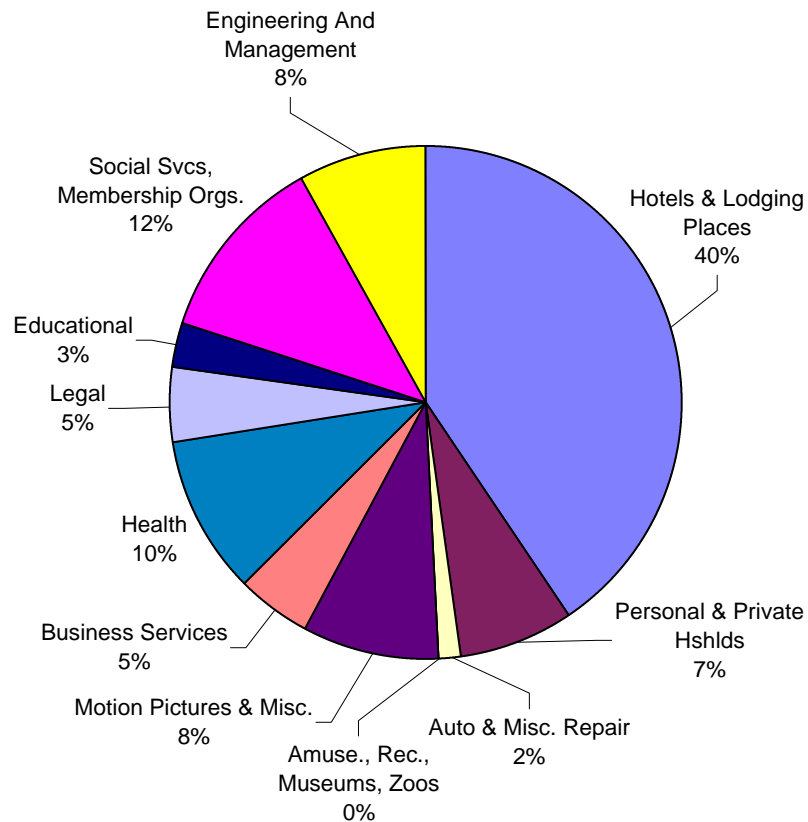
Source: REIS

**Figure 4: Timber Industry Income 1970-1998**



Source: REIS. Note: "Timber Industry" here comprises forestry, plus lumber and paper manufacturing.

**Figure 5: Personal Income, Service Industries, 1998**



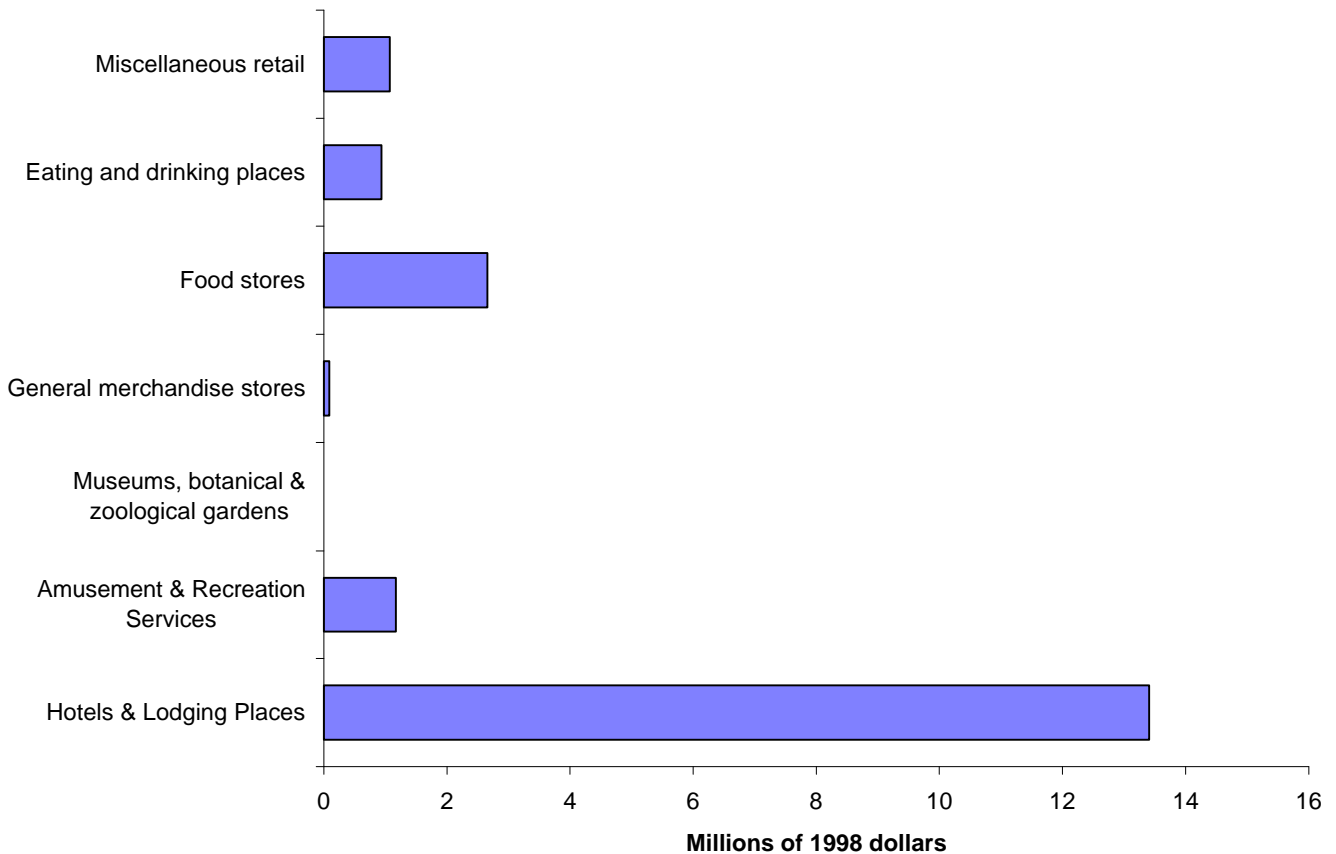
Source: REIS

**Table 2: Recreation and Tourism Related Income (selected industries) 1970-1998**

<i>All values in millions of 1998 dollars, unless noted</i>		Pct of total		Change		% Change	
		1970	1970	1998	1998	1970-1998	1970-1998
Total personal income		120	100%	273	100%	154	128.3%
Total recreation and tourism		5	n/a	19	n/a	n/a	n/a
<b>services</b>	Hotels & Lodging Places	0.05	0.0%	13.41	4.9%	13.36	26494.7%
	Amusement & Recreation Services	0.91	0.8%	1.17	0.4%	0.26	29.2%
	Museums, botanical & zoological gardens	n/a	n/a	n/a	n/a	n/a	n/a
<b>retail</b>	General merchandise stores	0.97	0.8%	0.09	0.0%	-0.88	-90.7%
	Food stores	2.09	1.7%	2.66	1.0%	0.57	27.2%
	Eating and drinking places	0.53	0.4%	0.94	0.3%	0.41	78.4%
	Miscellaneous retail	0.42	0.4%	1.07	0.4%	0.65	152.4%

Source: Bureau of Economic Analysis. 2000. *Regional Economic Information System CD-ROM*. Washington, DC: U.S. Department of Commerce.

**Figure 6: Income in Recreation and Tourism Related Industries, 1998**



Source: REIS

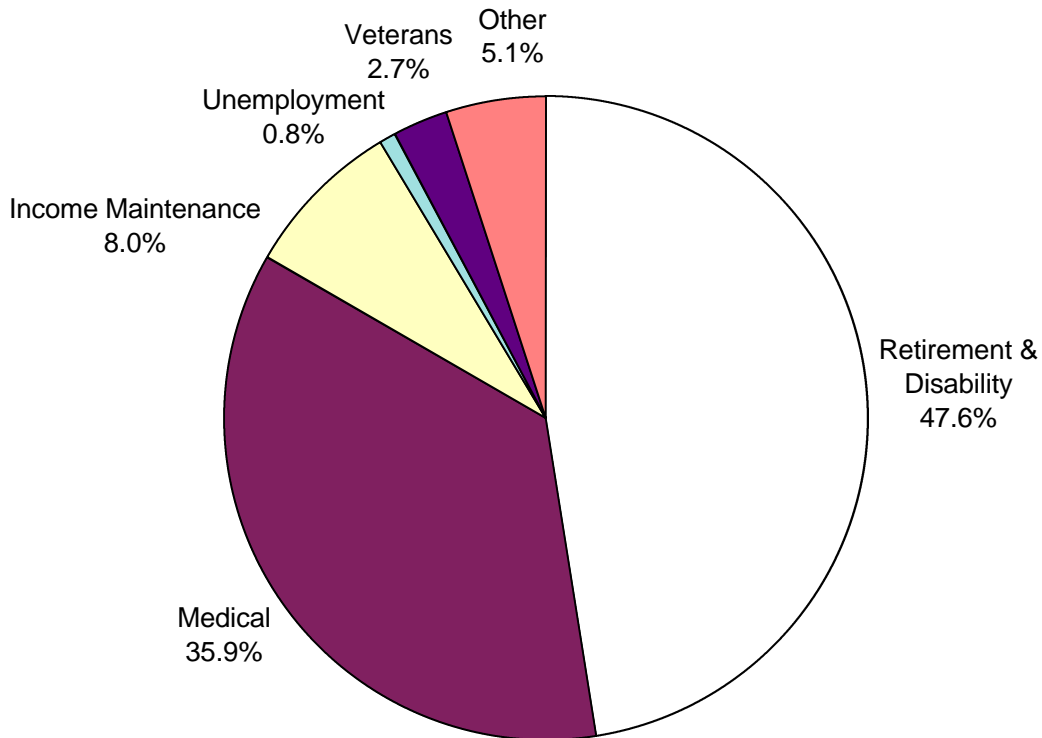
**Note:** Note that there are not single industries called "recreation" or "tourism." Both include a portion of several industries especially retail trade and services. Keep in mind that other industries also contribute to overall "Recreation and Tourism" activity.

**Table 3: Personal Income from Transfer Payments, 1970-1998**

All values in millions of 1998 dollars, unless noted	Pct of Total		Pct of Total		Change 1970-1998	% Change 1970-1998
	1970	1970	1998	1998		
<b>Total Personal Income</b>	120	--	273	--	154	128%
<b>Total Transfer Payments</b>	16	100%	54	100%	39	247%
Government Payments to Individuals	14	92%	52	95%	37	259%
Retirement & Disability Ins. Benefits <sup>1</sup>	10	65%	26	48%	16	155%
Medical Payments <sup>2</sup>	2	12%	19	36%	18	958%
Income Maintenance Benefits <sup>3</sup>	0	2%	4	8%	4	1345%
Unemployment Insurance Benefits	0	1%	0	1%	0	310%
Veterans Benefits <sup>4</sup>	2	12%	1	3%	(0)	-24%
Federal Education & Training Asst.	0	1%	0	0%	0	75%
Payments to Non-Profit Institutions	1	5%	2	3%	1	118%
Business Payments to Individuals	0	3%	1	2%	1	108%

Source: REIS. Bureau of Economic analysis. 2000. *Regional Economic Information System CD-ROM*. Washington DC: U.S. Department of Commerce.

**Figure 7: Transfer Payments, by Type, 1998**



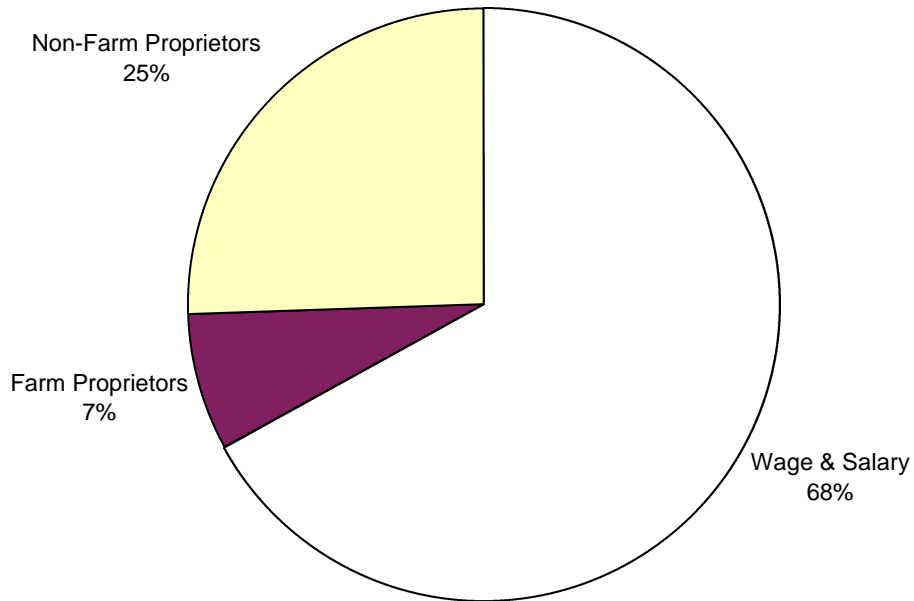
Source: REIS

**Table 4: Employment by Type and Industry, 1970-1998**

	1970	Pct of total 1970	1998	Pct of total 1997	Change 1970-1998	% Change 1970-1998
<b>TOTAL EMPLOYMENT</b>	3,172	100.0%	5,450	100.0%	2,278	71.8%
<b>Employment by Type:</b>						
Wage and salary	2,368	74.7%	3,655	67.1%	1,287	54.3%
Proprietors	804	25.3%	1,795	32.9%	991	123.3%
Farm	371	11.7%	407	7.5%	36	9.7%
Nonfarm <sup>1</sup>	433	13.7%	1,388	25.5%	955	220.6%
<b>Employment by Industry<sup>2</sup></b>						
Farm	596	18.8%	469	8.6%	-127	-21.3%
Nonfarm	2,576	81.2%	4,981	91.4%	2,405	93.4%
Private	2,086	65.8%	4,338	79.6%	2,252	108.0%
Ag. svcs, forestry, fishing & other <sup>3</sup>	30	0.9%	201	3.7%	171	570.0%
Mining	23	0.7%	25	0.5%	2	8.7%
Construction	111	3.5%	546	10.0%	435	391.9%
Manufacturing	777	24.5%	266	4.9%	-511	-65.8%
Transportation and public utilities	214	6.7%	283	5.2%	69	32.2%
Wholesale trade	14	0.4%	68	1.2%	54	385.7%
Retail trade	336	10.6%	509	9.3%	173	51.5%
Finance, Insurance & Real Estate	120	3.8%	253	4.6%	133	110.8%
Services	461	14.5%	2,189	40.2%	1,728	374.8%
Government	490	15.4%	643	11.8%	153	31.2%
Federal, civilian	71	2.2%	57	1.0%	-14	-19.7%
Military	79	2.5%	54	1.0%	-25	-31.6%
State and local	340	10.7%	532	9.8%	192	56.5%

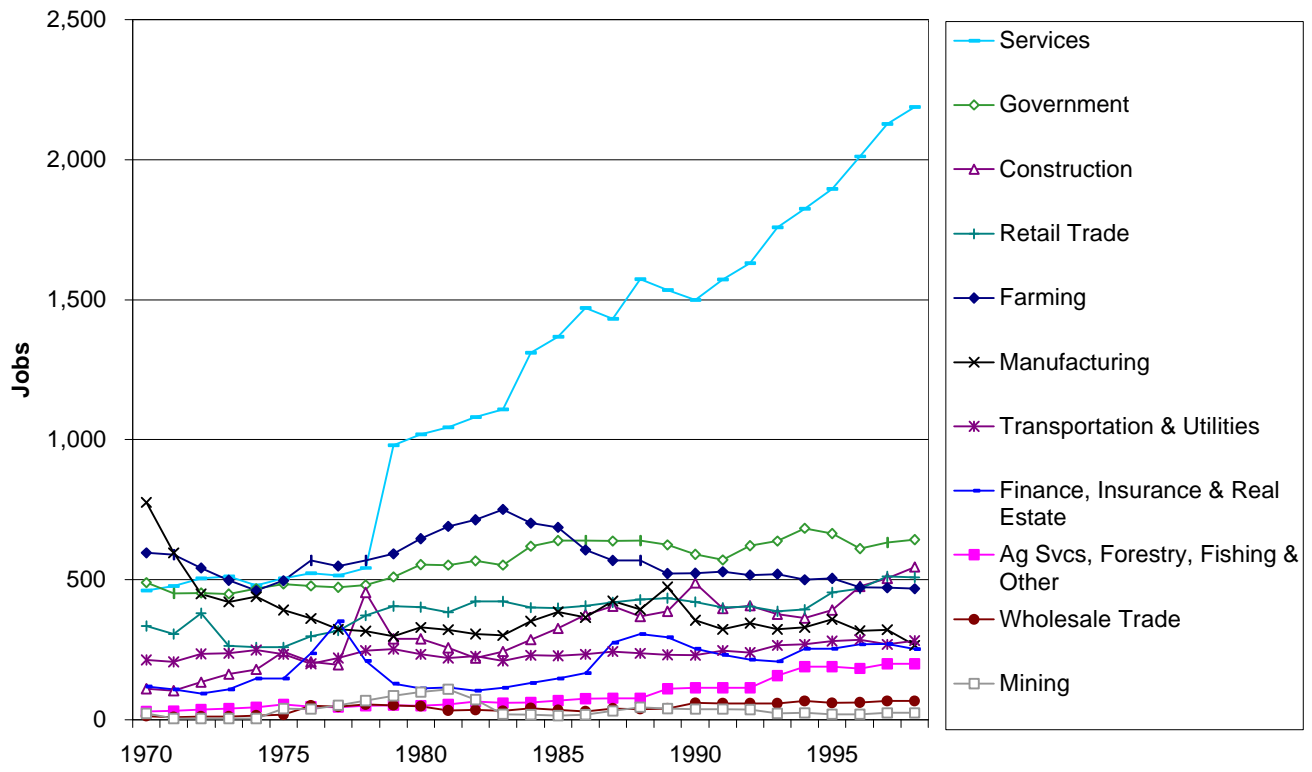
Source: Bureau of Economic Analysis. 2000. *Regional Economic Information System CD-ROM*. Washington, DC: U.S. Department of Commerce.

**Figure 8: Employment by Type, 1998**



Source: REIS

Figure 9: Trends in Employment by Industry, 1970-1998



Source: REIS